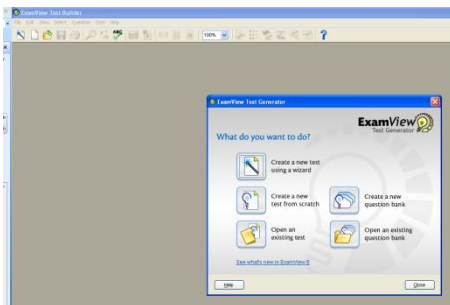


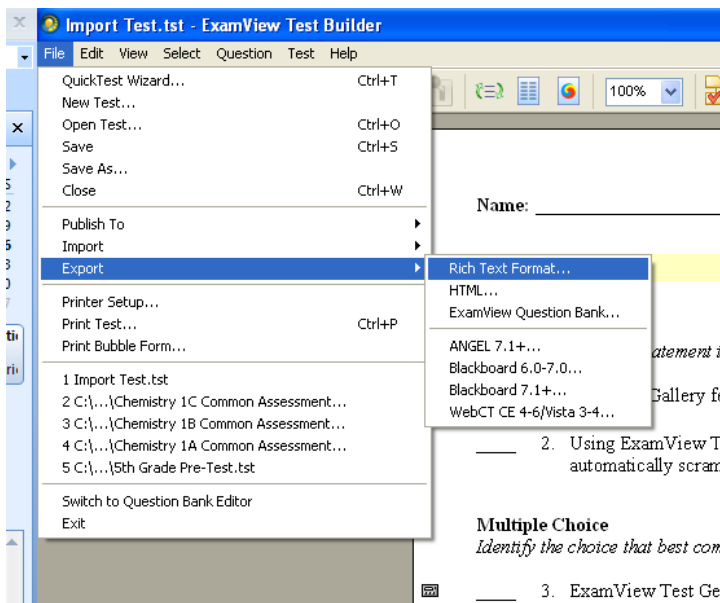
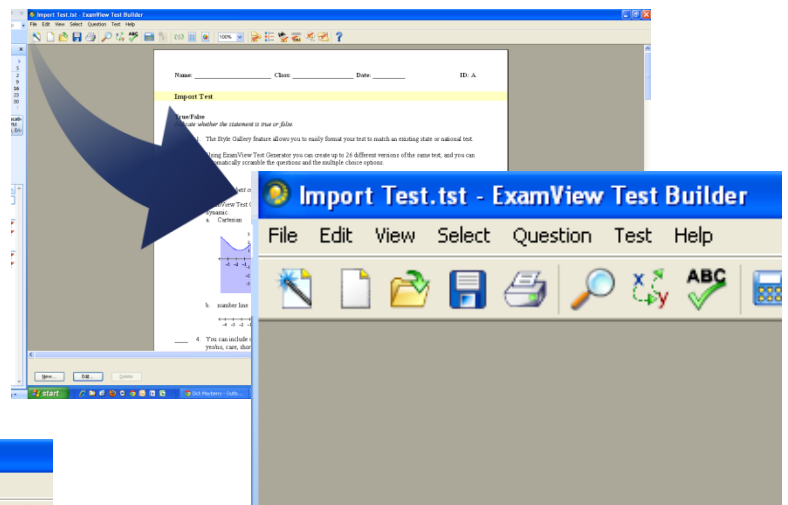
# Importing ExamView tests to TurningPoint 5

If you have done any Self-Paced Polling in TurningPoint 5 you know how easy it can be to create a key for any written assessment with True/False, multiple choice, matching, numerical or short answer questions. Many of you have access to ExamView Test Generator and existing tests created within that program. Wouldn't it be nice if your test questions, answer options and correct answers could be directly imported to a TurningPoint Question list without retyping? Try this.

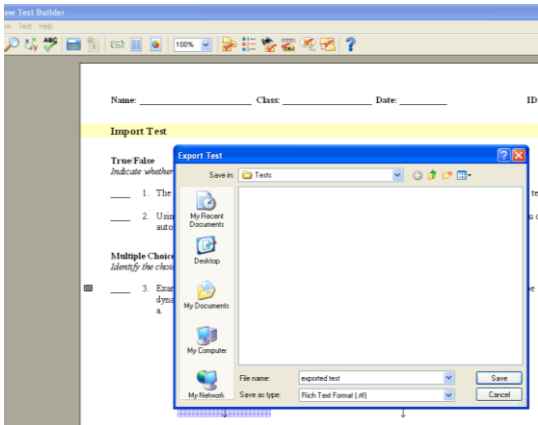


Create or open a test in the ExamView Test Generator program. For instructions on working with ExamView, visit [bit.ly/LCStech](http://bit.ly/LCStech) and click on the ExamView Resources link.

With the test open in ExamView, click on **File** in the toolbar on the upper left corner of the screen.

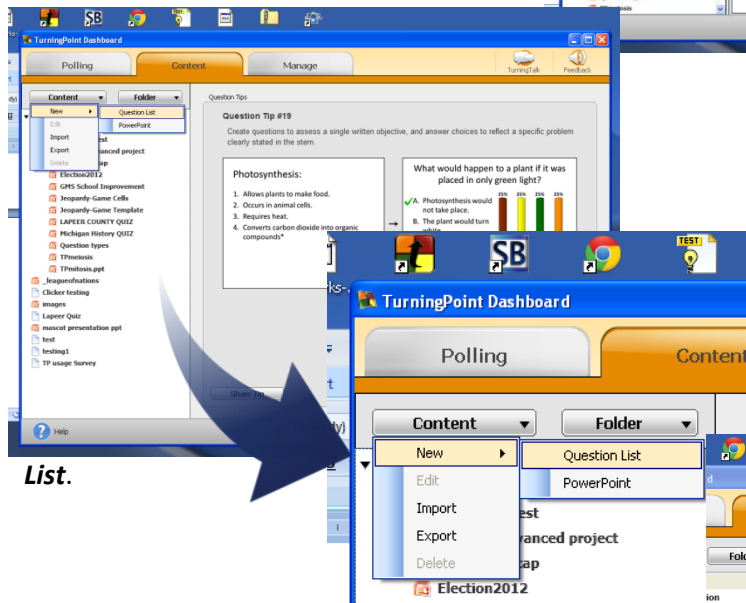
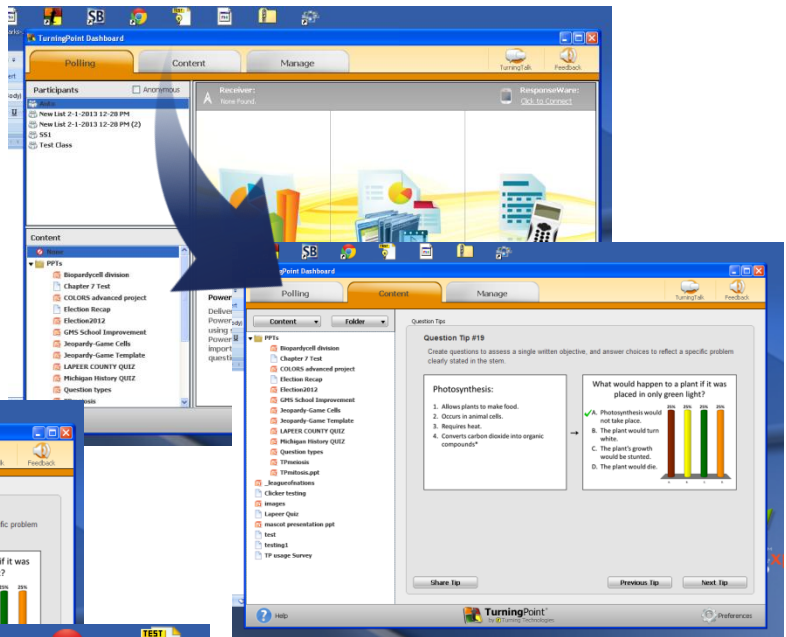


Choose **Export**, then **Rich Text Format** from the dropdown menu.



Save your exported test to some location. By default ExamView will store the .rtf file in the Test folder under C:\ExamView. You may choose to save to the desktop, a flashdrive or some other location.

Open TurningPoint5 and click on the **Content** tab from the dashboard.

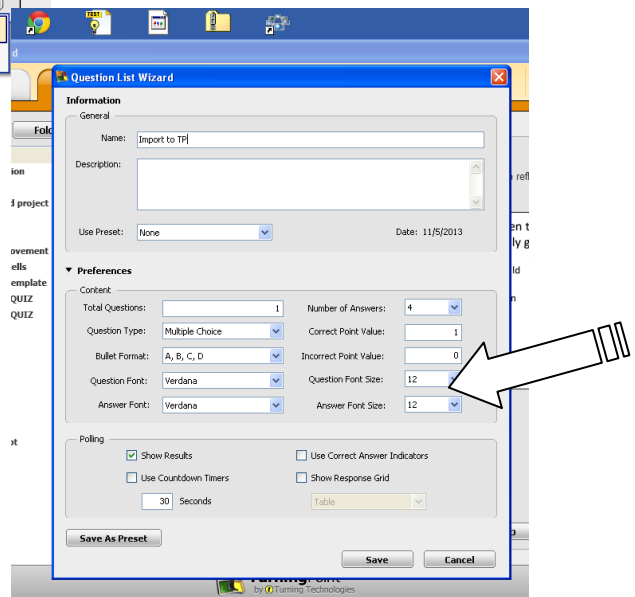


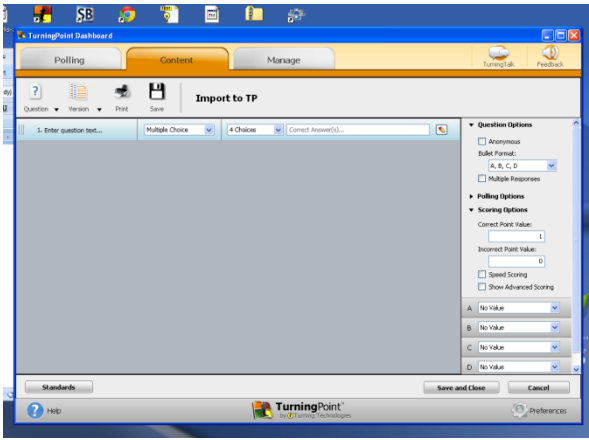
**List.**

Under **Content**, select **New** and **Question**

On the **Question List Wizard** menu that appears, enter the name for your new Question List as you wish it to appear in the **Content** menu when you are done.

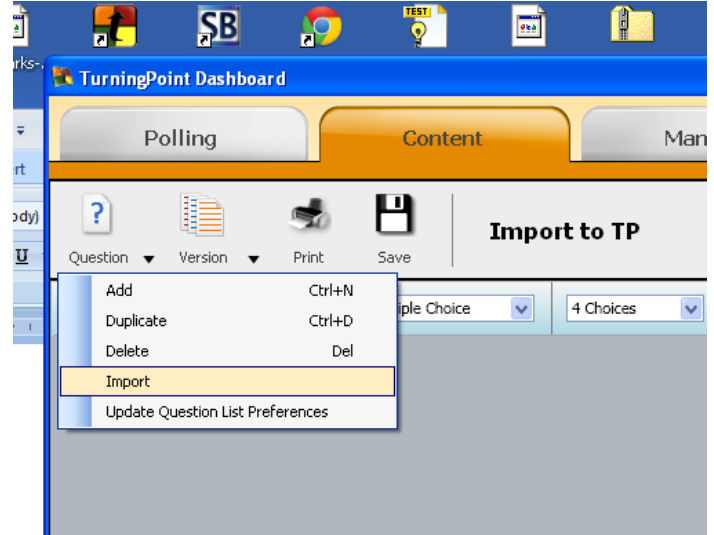
This is also a good time to change the default **Question and Answer Font Sizes** from 12 to something like 36 or so to make them more visible during projection for the class. Then click **Save**.



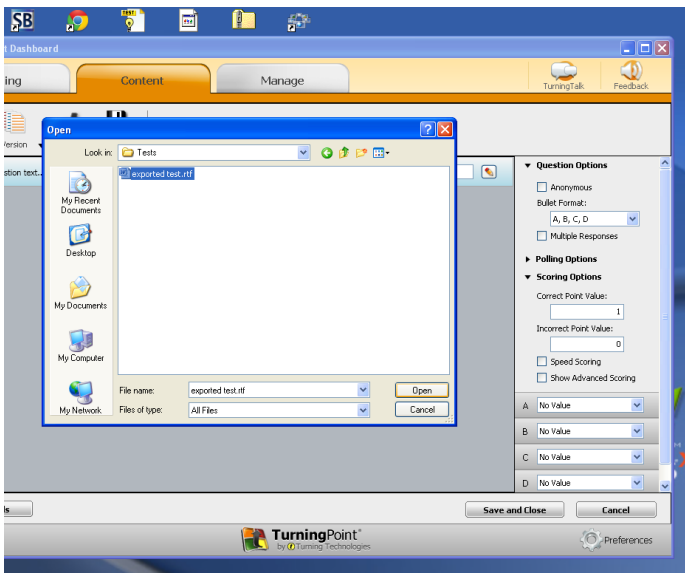


The new Question List will appear with one question template. You can click on the question and delete it now or at some later time as it will not be a necessary part of your imported test.

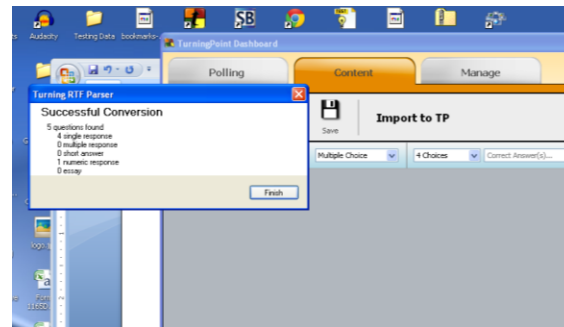
Click on the **Question Icon** in the upper right and choose **Import** from the drop-down menu.



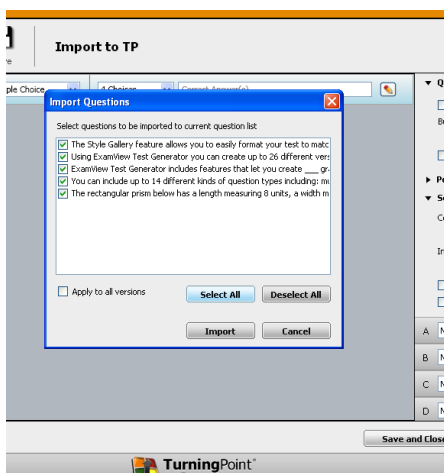
Navigate to the location where you saved the .rtf version of the test, select the file and click **Open**.

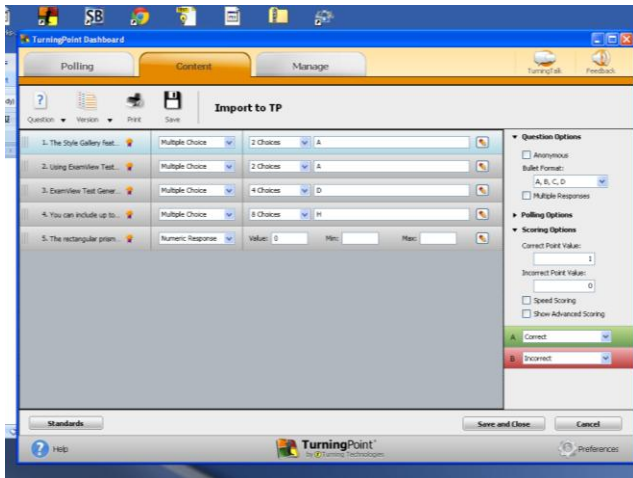


The "Parser" tool will report the number and type of questions converted. Click **Finish**.



At this point you may select the test questions you wish to remain in your Question List. Those you wish to exclude can be unchecked before clicking the **Import** button.

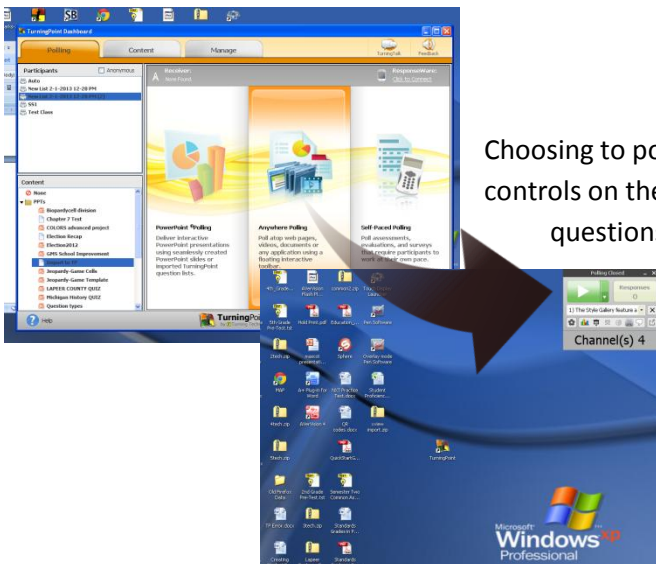
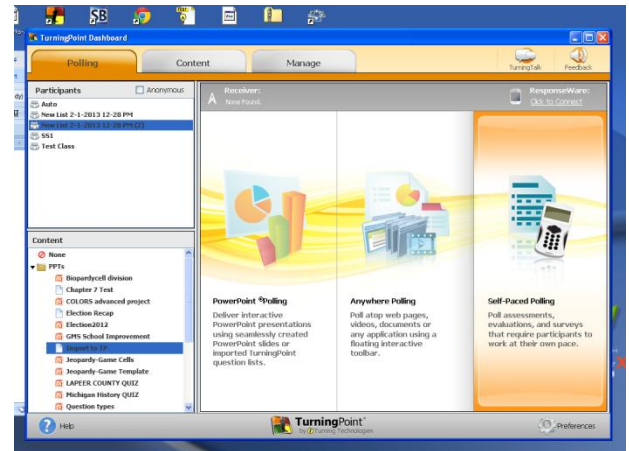




The questions, answer options and correct answers are now part of a new Question List and clicking the **Save and Close** button will add the list to your content menu in TurningPoint.

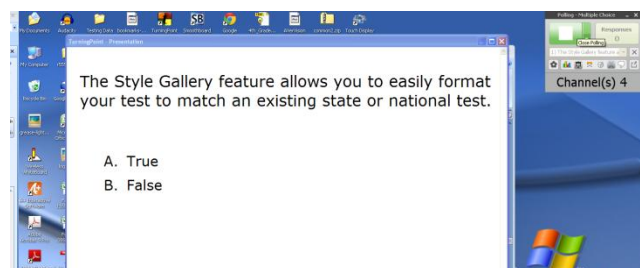
## Polling the imported Question List

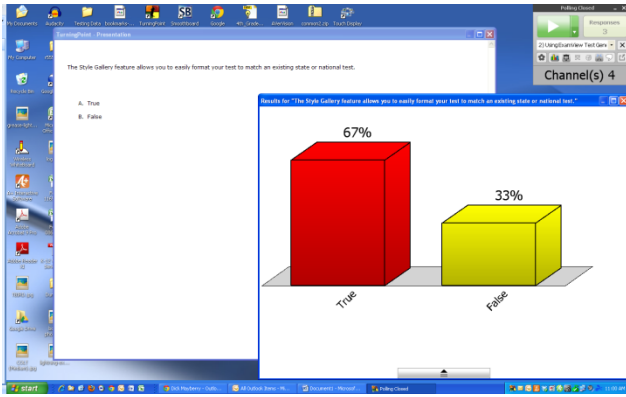
The Question List can now be polled by any option in the polling tab of the Dashboard. Just choose the Participant List and Question Lists, then the Polling method you prefer. The Self-Paced Polling option will use the question list key as you have done before to administer and check a written test providing instant feedback, grades and reports of the results of your testing session. However, the same imported question list can be polled under the PowerPoint and AnyWhere polling methods.



Choosing to poll the participants **AnyWhere** will place the polling controls on the desktop as usual, but opening polling will display the questions and options for data collection.

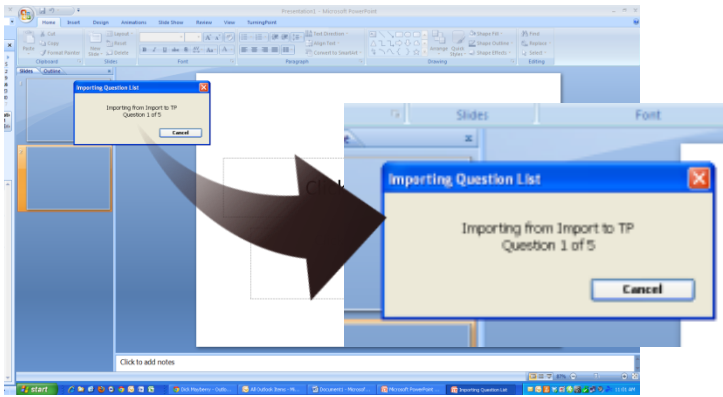
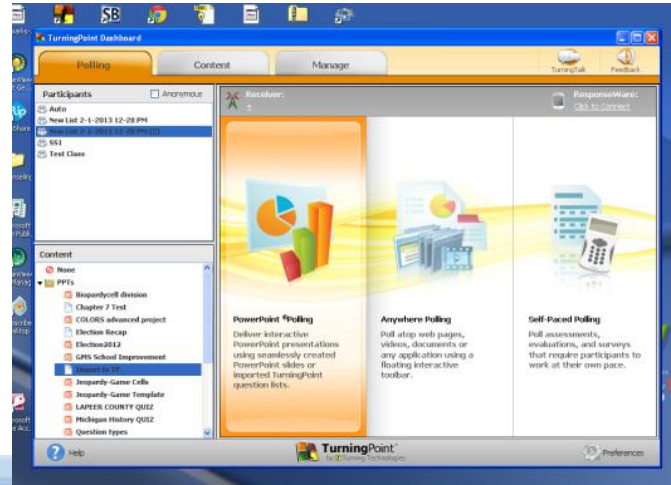
(This is where changing font size in the **Question List Wizard** pays off.)





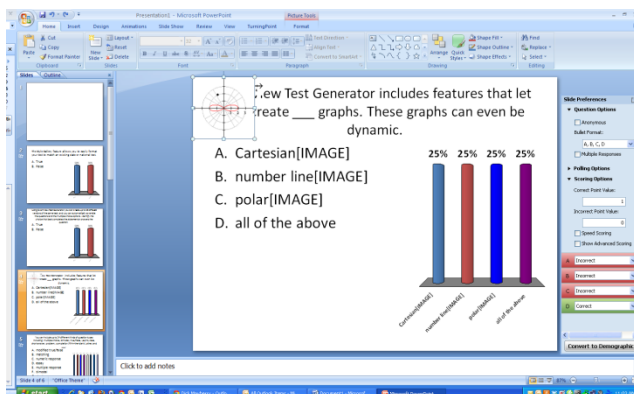
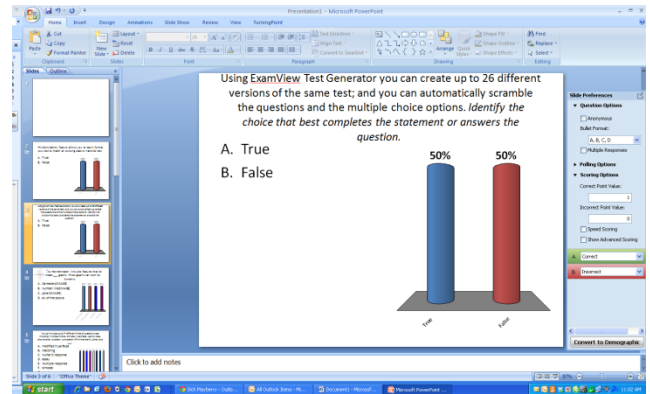
When polling is closed for each question, the results graph appears for discussion. Closing the graph and clicking the triangular Open Polling button will display the next question and answer option for polling. Closing the polling control tool will prompt you to save your session data.

Choosing to poll the imported question list in PowerPoint opens the TurningPoint Parser which automatically creates a PowerPoint slide for each question from ExamView.



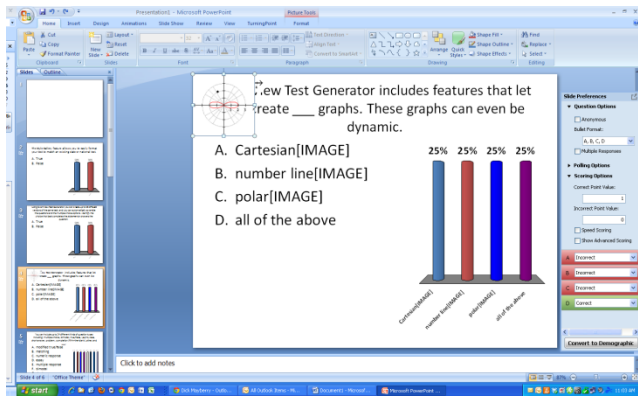
All text for each question will be positioned as a normal TurningPoint question slide in PowerPoint with the fonts already resized. Once parsed, you can edit the slide like any other in PowerPoint.

You can even supplement the question slides for review or post-test discussions by inserting informational slides between the imported questions.



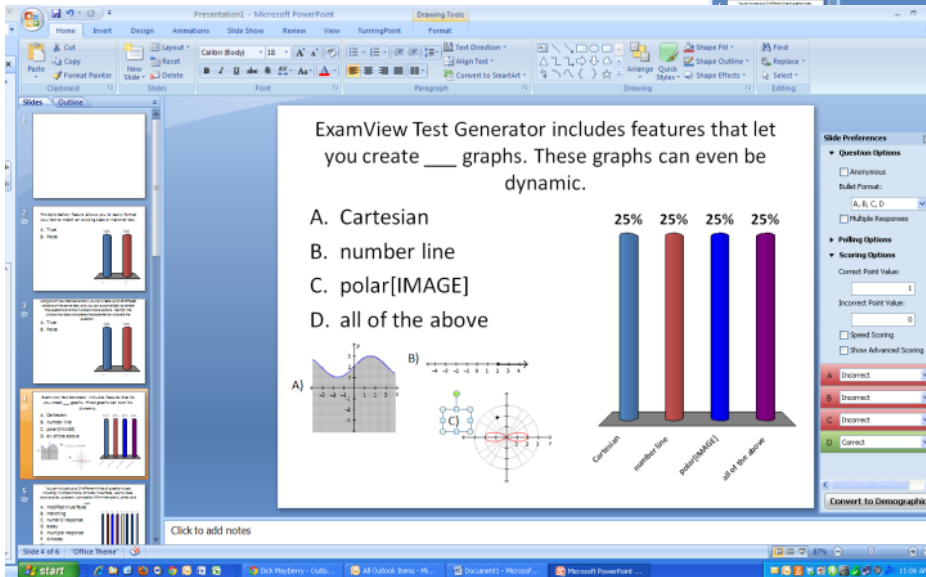
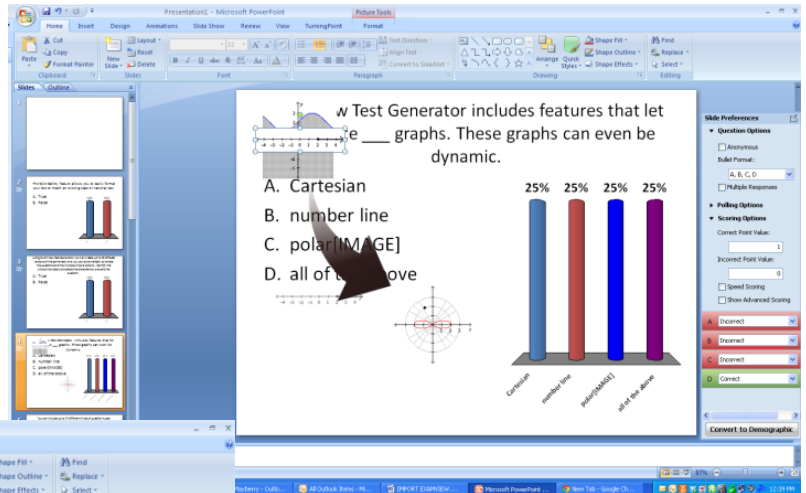
If the question in ExamView contains graphics, the parser will include the images on the slide, and the user can reposition them manually like any other image in PowerPoint.





On this slide, three different types of graphs are compared in a math question. All three are in the upper left-hand corner of the slide and a placeholder, [IMAGE], is appended to the answer options.

The images can be resized and drag/dropped to a convenient position on the slide and labeled appropriately before running the presentation.



Importing the ExamView test opens up multiple options for administering your assessment or review with the TurningPoint clickers.